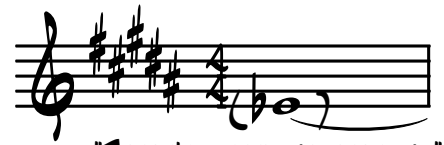


# SOON AS I GET HOME

AS BY LIZZ WRIGHT



"THERE'S A FEELING HERE IN-"

**RHOES**

2

-SIDE"

6

$Bb$ MA7 G MIN7  $Bb$ MA7

10

G MIN7  $Bb$ MA7 G MIN7  $Bb$ MIN  $Bb$ MA7 C# MIN7  $Eb$ MIN

17

$B$ MIN7 A MA7 ( $F\#$ ADD2)  $F\#$ MA7 E MA7 D MA7

22

$Bb$ MA7  $Bb$ 6

25

G# MIN7

TIME  $\text{♩} = 79$

$B$ MA7 ADD LIGHT CYMBALS, BRUSHES

(PIANO)

**(A) BAND IN**

29

"IN A DIFFERENT PLACE..."

$B$ MA7 A MA7/ $B$   $B$ MA7 A MA7/ $B$

37

E MA7  $F\#$ /E E MA7  $F\#$ /E

41

D#M7(b9) G#7(#4) C#MIN9 GMA7/A

46

BMA7 AMA7/B

(PIANO)

50

BMA7 AMA7/B

54

EMA7 F#/E EMA7 F#/E

58

D#M7(b9) G#7(#4) C#MIN9 GMA7/A

RIT. SUSTAIN TIL CHORO

BAND OUT C#M7(b9)

63

BMA7 G#MIN AG (TOMS)

BAND IN REPEAT TO FADE

66

GMA7(#11)

BASS LINE

REPEAT TO FADE